

Locate, find, manage and administer things

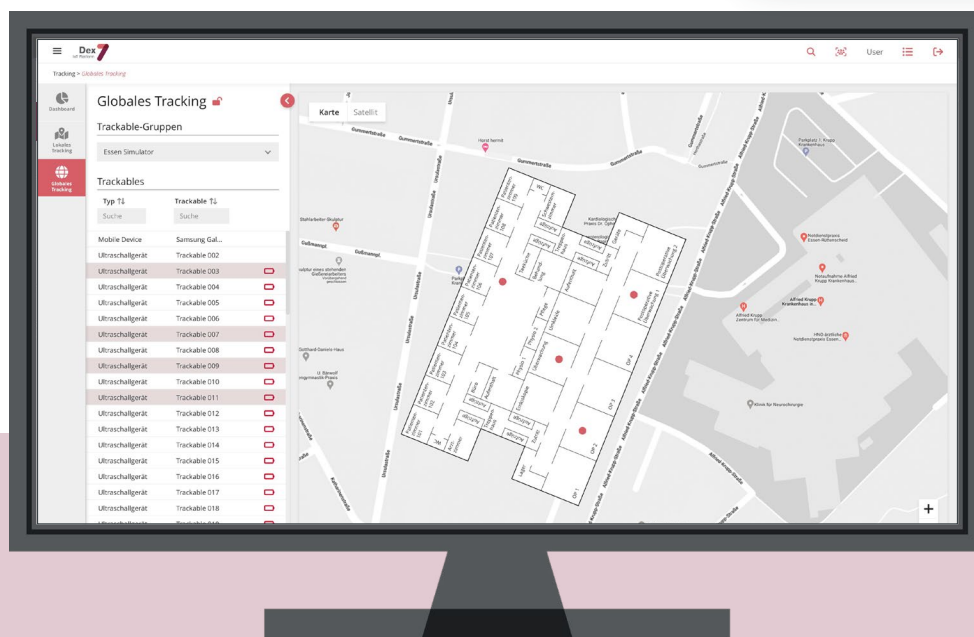
The whole world of IoT: Tracking, facility and parking management with Dex7



Do you spend hours looking for work utensils such as tools or medical equipment? Or do you spend ages driving around looking for a parking space? With Dex7, you can find what you're looking for in seconds. Let Dex7 visualise the data generated by the objects and plan optimised routes or more effective maintenance cycles. Create digital twins of ultrasonic devices or water pumps. Manage buildings, car parks, delivery slots or entire airports. With Dex7, you can give objects and buildings a voice and let them communicate with each other. Thanks to retrofit technology, Dex7 is able to communicate with almost any object. Appreciate Your Time - not only do you save costs, you also gain a lot of time for more important things.

Dex7 offers tracking, smart facility and smart parking management

- **Dex7** is an IoT solution that can connect various Real Time Tracking System Solution (RTLS) as required and can find trackable objects.
- **Dex7** can not only locate and find objects, but also visualise the charge status, fill level or service requirements of doors and windows for facility management.
- **Dex7** Dex7 enables digital parking space management, parking ticket issuance or licence plate recognition based on real-time occupancy data.



Optimum usability and clarity: all objects are visualised by position and status using the integrated views.

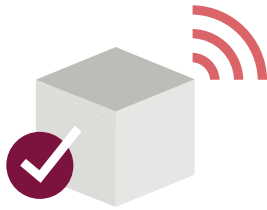
Dex7 is uncomplicated, effective and reduces costs

Dex7s trackables work in WiFi environments, with Bluetooth Low Energy (BLE) and Radio-Frequency Identification (RFID), magnetic fields or GPS, depending on requirements.

Dex7 can be deployed at lightning speed in all environments. Only minimal intervention in the IT environment is required.

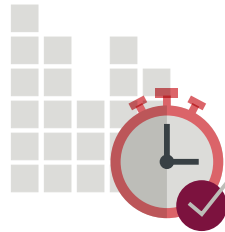
Dex7s reduces costs through better asset management, timely maintenance and reduction of emergency repairs.

Three reasons for Dex7



Making existing devices smart

Retrofit - objects, devices and vehicles from all manufacturers can be made smart using sensor technology.



Wait and see instead of blindly maintaining

You receive immediate answers from collected data and only have to service your devices when it is really necessary.



Not only find, but also optimise

Not only do you find your devices faster, the data also allows you to optimise processes, reduce costs and optimise energy consumption.

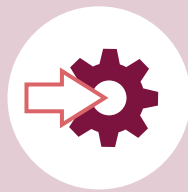
AKTION	AUSWIRKUNG	UMSETZUNG MIT DEX7
Device location	Worldwide localisation of assets and people possible	✓
Utilisation & usage time	Details of each device. From the serial number to the last inspection	✓
System availability	For assets that already contain sensors	✓
Service tracking	Information on running times, maintenance times, anomalies and capacity utilisation	✓
Building management	Management of building assets (e.g. doors, windows and fire alarm systems)	✓
Car park management	Management of car parks or lorry slots	✓

DD-DEX7-523



Made in Germany

Dex7 is 100% GDPR compliant and 100% developed in Germany



Based on ISO/IEC 27701

Dex7 is based on the international standard for the data protection management system ISO/IEC 27701.



ISO 27001 certified

Dex7 is developed under high security standards. The developer environment has an ISO/IEC 27001 certification.

